



# CS4070 Companion Scanner

## APPLE IOS COMMON CONFIGURATIONS

Default symbologies

HID Slave, Mobile/phone display enabled



IOS host, No data suffix  
Auto reconnect enable  
15 minute sleep timeout



IOS host, No data suffix  
Auto reconnect enable  
No sleep timeout



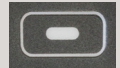
IOS host, <ENTER> key suffix  
Auto reconnect enable  
15 minute sleep timeout



IOS host, <ENTER> key suffix  
Auto reconnect enable  
No sleep timeout



To toggle mute —  
hold down trigger —  
for 10 seconds



IOS Keyboard  
toggle when  
connected



Press and hold for  
~5 seconds (until  
it beeps) to enable  
discoverable mode  
& pair with a mobile  
device in slave mode

## ANDROID/WINDOWS COMMON CONFIGURATIONS

Default symbologies, HID security set to Low (for no PIN entry)

HID Slave, Mobile/phone display enabled



Android/Win, No data suffix  
Auto reconnect enable  
15 minute sleep timeout



Android/Win, No data suffix  
Auto reconnect enable  
No sleep timeout



Android/Win, <ENTER>  
key suffix  
Auto reconnect enable  
15 minute sleep timeout



Android/Win, <ENTER>  
key suffix  
Auto reconnect enable  
No sleep timeout



To temporarily unpair the scanner and host, press and hold the Bluetooth button for ~3 seconds then release. The scanner will beep and the bluetooth indicator will stop flashing.

Auto reconnect is enabled by default, however, if auto reconnect is not enabled, you will have to re-pair with the device in order to re-connect!

When auto-reconnect is enabled, the scanner automatically tries to reconnect to a remote device when a disconnection occurs that is due to the radio losing communication.

Sleep timer is set to a timeout of 14,400 seconds (4 hours) by default. If set to "no sleep timeout", the scanner will remain awake until the battery is depleted!

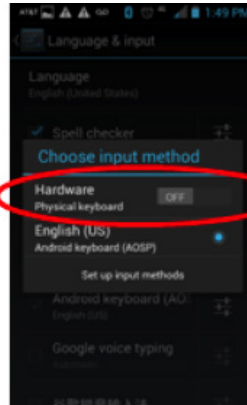
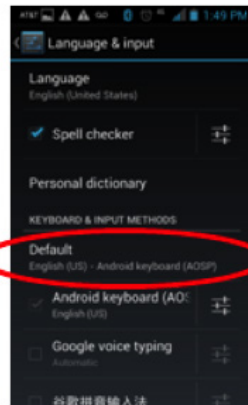
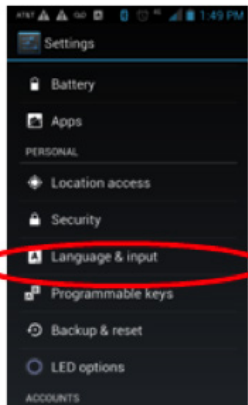
## HOW TO ENABLE POP-UP KEYBOARD ON ANDROID DEVICES WITH CS4070

If the Android device keyboard does not appear when CS4070 is connected, try the steps below

Go to settings and select "Language & Input"

Tap on "Default"

Slide Hardware Physical keyboard to "OFF"



Note — if the CS4070 disconnects, you may have to change this setting again (e.g. this may be only a temporary setting).

**FOR MORE INFORMATION, VISIT [WWW.ZEBRA.COM/123SCAN2](http://WWW.ZEBRA.COM/123SCAN2)**



**NA and Corporate Headquarters**  
+1 800 423 0442  
inquiry4@zebra.com

**Asia-Pacific Headquarters**  
+65 6858 0722  
contact.apac@zebra.com

**EMEA Headquarters**  
zebra.com/locations  
mseurope@zebra.com

**Latin America Headquarters**  
+1 847 955 2283  
la.contactme@zebra.com